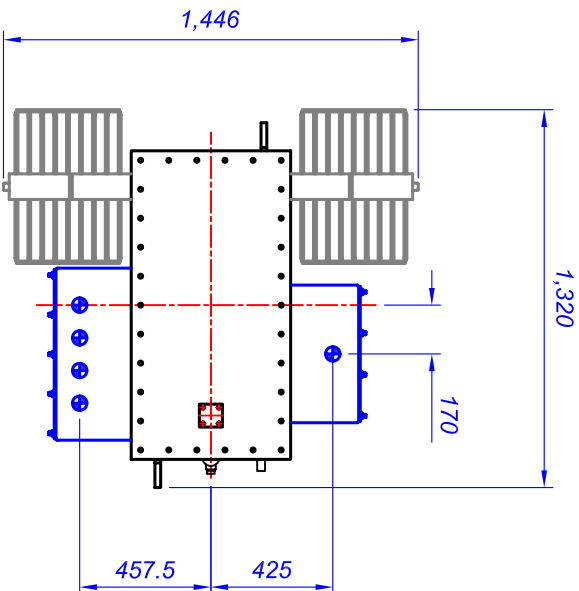


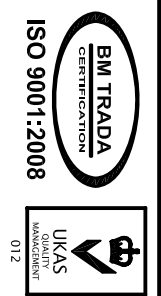
ITEM	DESCRIPTION
1	HV CABLE BOX 3 POLE 1 GLAND (TERMINATION KIT RECD)
2	LV CABLE BOX 4 POLE 4 GLAND AIR FILLED
3	TRANSFORMER OIL FILLER COVER
4	THERMOMETER POCKET
5	LIQUID LEVEL GAUGE
6	EARTHING TERMINAL ONE EACH SIDE
7	SKID UNDERBASE C/W HAULAGE HOLES
8	MAIN LIFTERS
9	BREATHER
10	TAPPING SELECTOR CONTROL HANDLE
11	RATING AND DIAGRAM PLATE
12	DRAIN VALVE
13	RADIATORS

BOWERS JOB NO.	
BOWERS STOCK NO.	
OUTPUT	315 KVA
VOLTAGE RATIO	11000 / 433
AMPERES	16.5 / 420
PHASES	3
FREQUENCY	50Hz
VECTOR SYMBOL	Dyn11
ESTIMATED WEIGHTS	KG
CORE AND WINDINGS	607
COOLING LIQUID	358 LTRS
TOTAL WEIGHT	1380



This drawing is COPYRIGHT and the property of Bowers Electricals Ltd. It must not be copied (in whole or in part) without prior written consent of the company.

TOLERANCE UNLESS OTHERWISE STATED:
 3mm FOR DIMENSIONS UP TO 200mm
 1.2mm FOR DIMENSIONS OVER 200mm
 2.0mm FOR DIMENSIONS OVER 1000mm.



Rev	Revision note	Date	Signed	Checked

Bowers Electricals Ltd
 Heanor Gate Road,
 Heanor, Derbyshire, DE75 7GX
 Tel: 01773 531531 Fax: 01773 716171
 E-mail: enquiries@bowerselc.co.uk

Drawn by A.WILCOXSON
 Checked by C.MEISE
 GENERAL ARRANGEMENT OF
 315KVA ONAN TRANSFORMER

Approved by D.MESBITT	Orig. Job No. STOCK	Date 09/05/11	Drq. Size A3
DRG No. BE5324	Scale 1:20	Revision 0	Sheet 1/1